

Amigabit Disk Defrag Quick Start Guide

Congratulations! You have selected Amigabit Disk Defrag, which makes it never so easy to accelerate the PC system with fast and safe disk defragment and too large file removal. This powerful tool combines both Disk Defragmenter and Top File Finder into one program.

Navigation

Disk Defragment

Display your current computer registry health status. Perform a complete scan on system Registry entries.

Big File Finder

Scan the Windows Registry entries and clean the detected unused, old, or invalid Registry entries in one place.

Settings

One click to defrag Windows Registry entries to fix computer errors .

Main Screen



- **Update:** Check for the latest version available.
- **Help:** Reach Help documents instantly.
- **About:** Provide details about software version, company information, trademarks, licensed information and more.
- **Shut down PC after defragmentation:** Select to free up your hand. You can go away from your computer to do something else during the disk defragmenting process.
- **Defrag Schedule:** Click to open the Disk defragment scheduler.

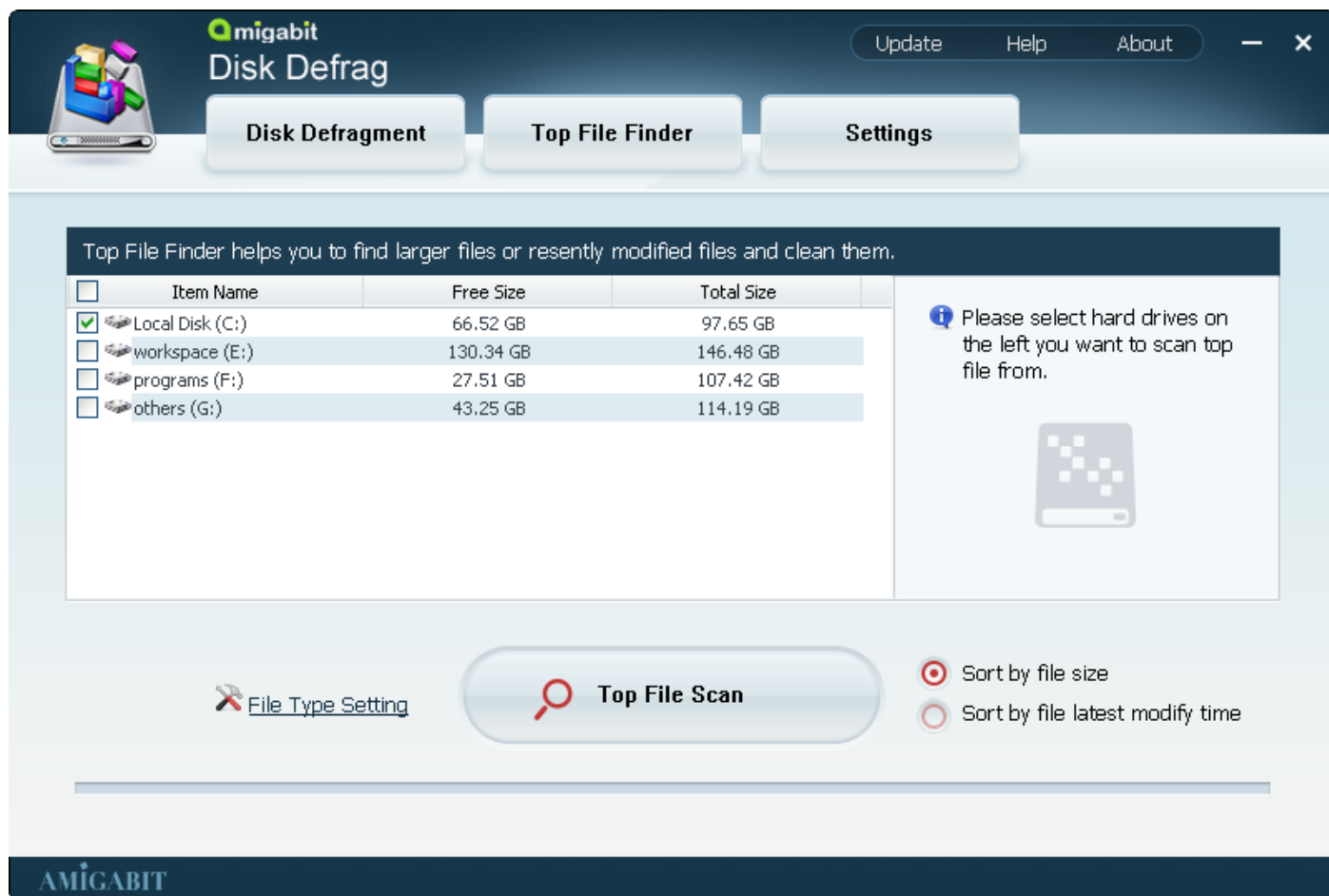
Disk Defragment Screen

Amigabit Disk Defrag has the most intuitive user interface. Once launching the software, you go to the Disk Defragment directly:

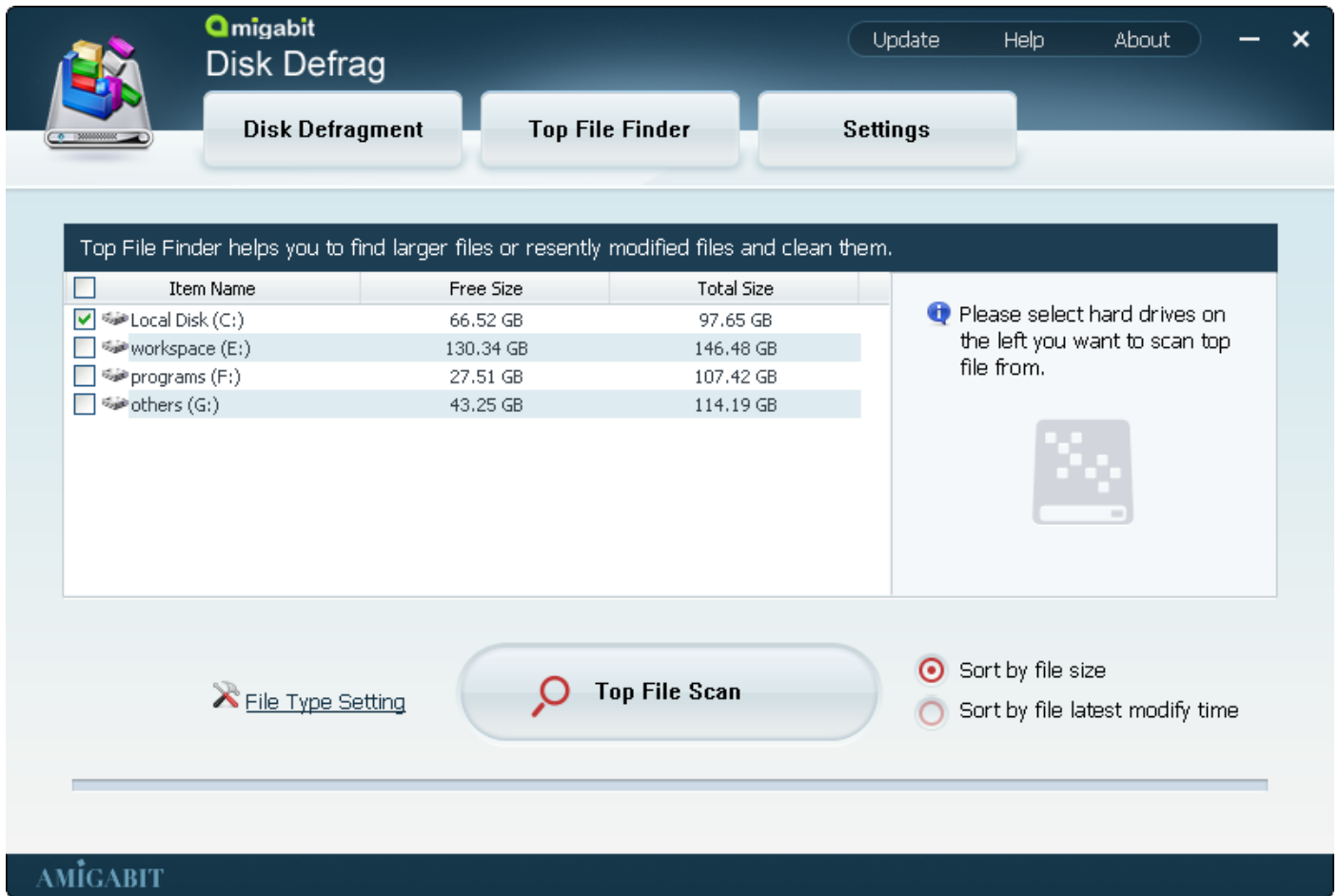


- Step 1. Choose the hard disk drive you want to start defragmentation.
- Step 2. Click on the Analyze button to begin the disk analyzing and then click on the Defrag button to defrag your hard drive, or you can defrag your hard disk without analyzing by the One Click Defrag button.

Top File Finder Screen



- Step 1. Choose the hard disk drive(s) you want to find out the big files.
- Step 2. Click on the Top File Scan button.

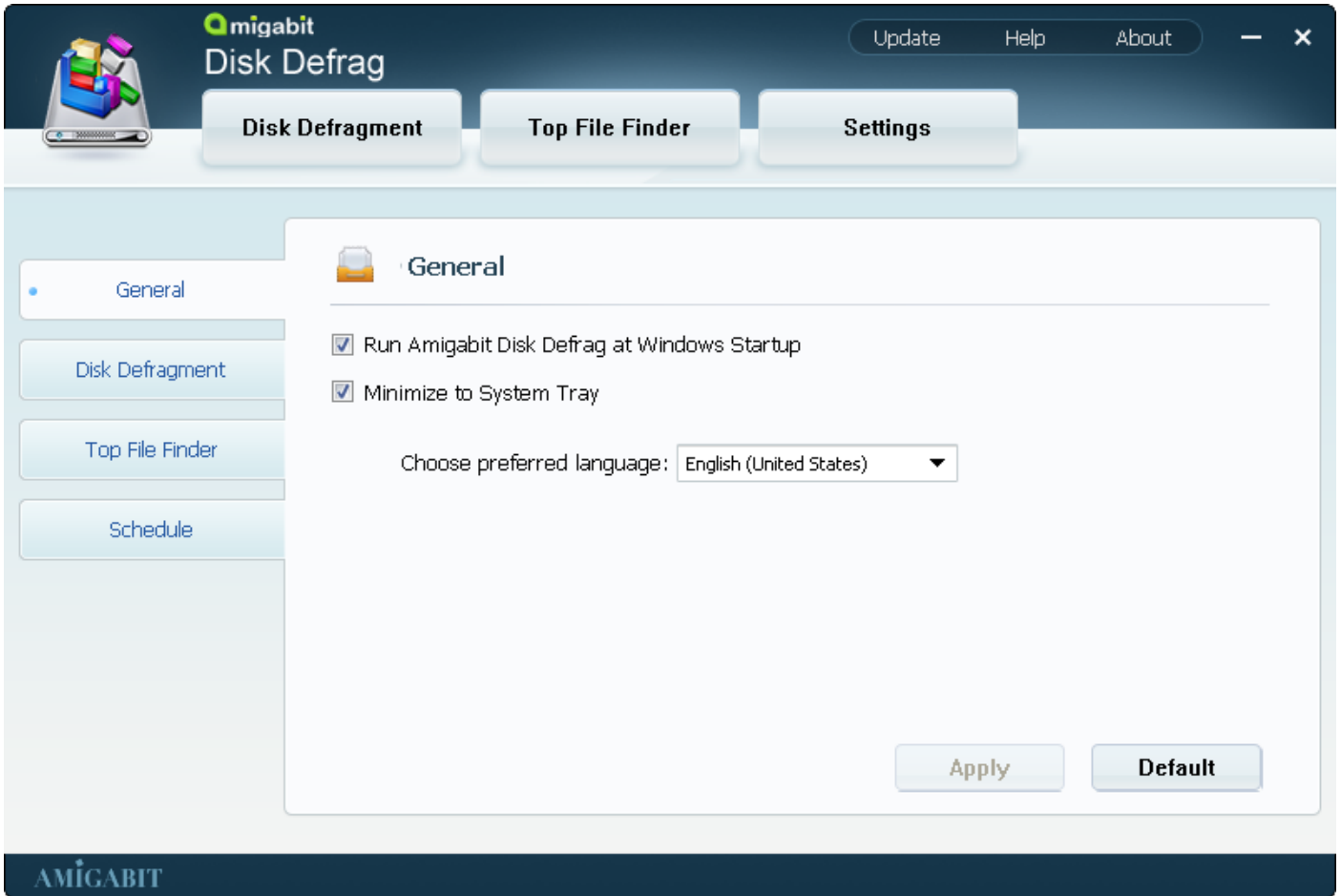


- Step 3. After big file scanning completes, handle the big files by: delete, move (to other location), Properties (see detailed information), Open Folder (access to the file destination folder).

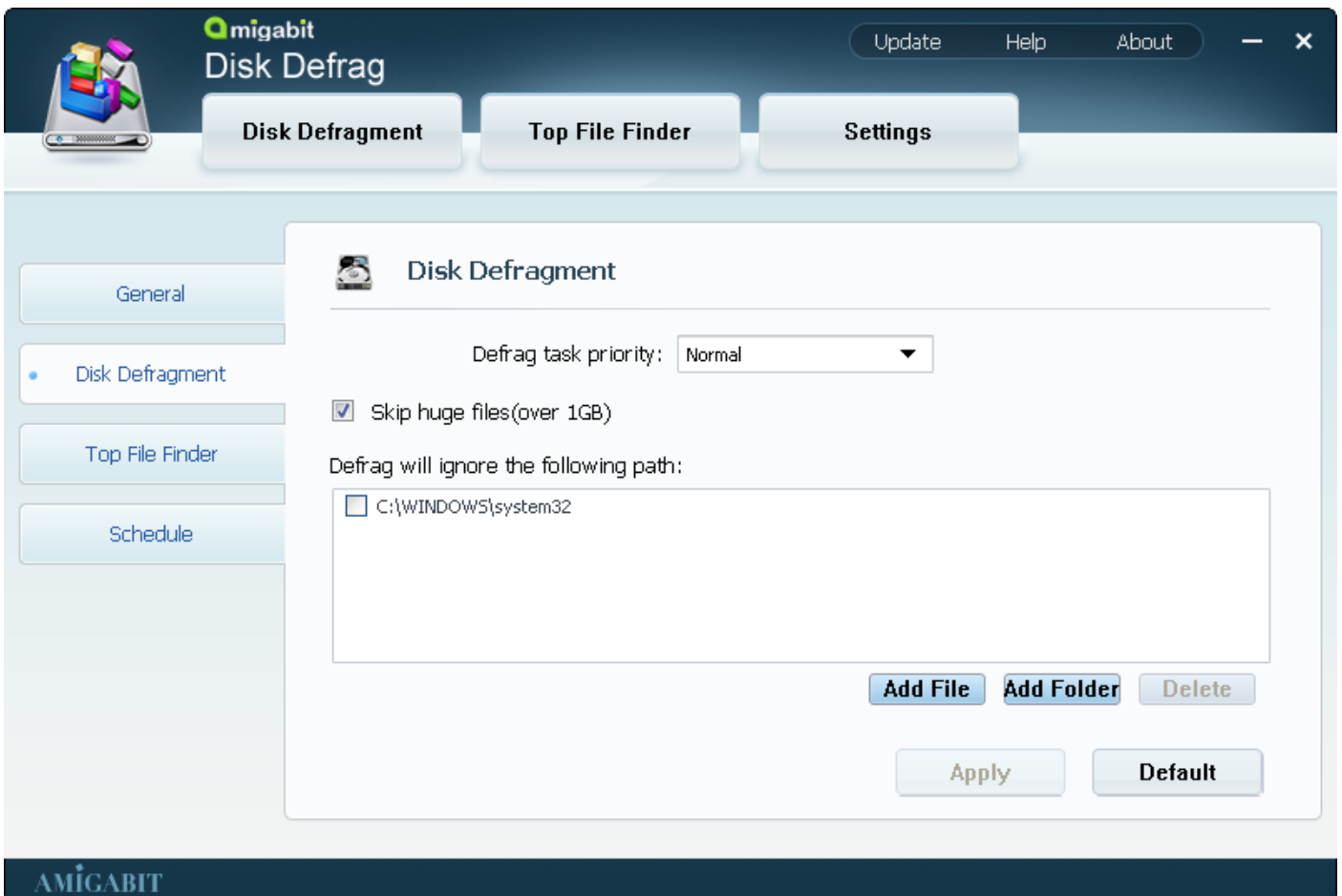
Settings Screen

Custom personal settings here: **General, Disk Defrag, Top File Finder, Schedule**

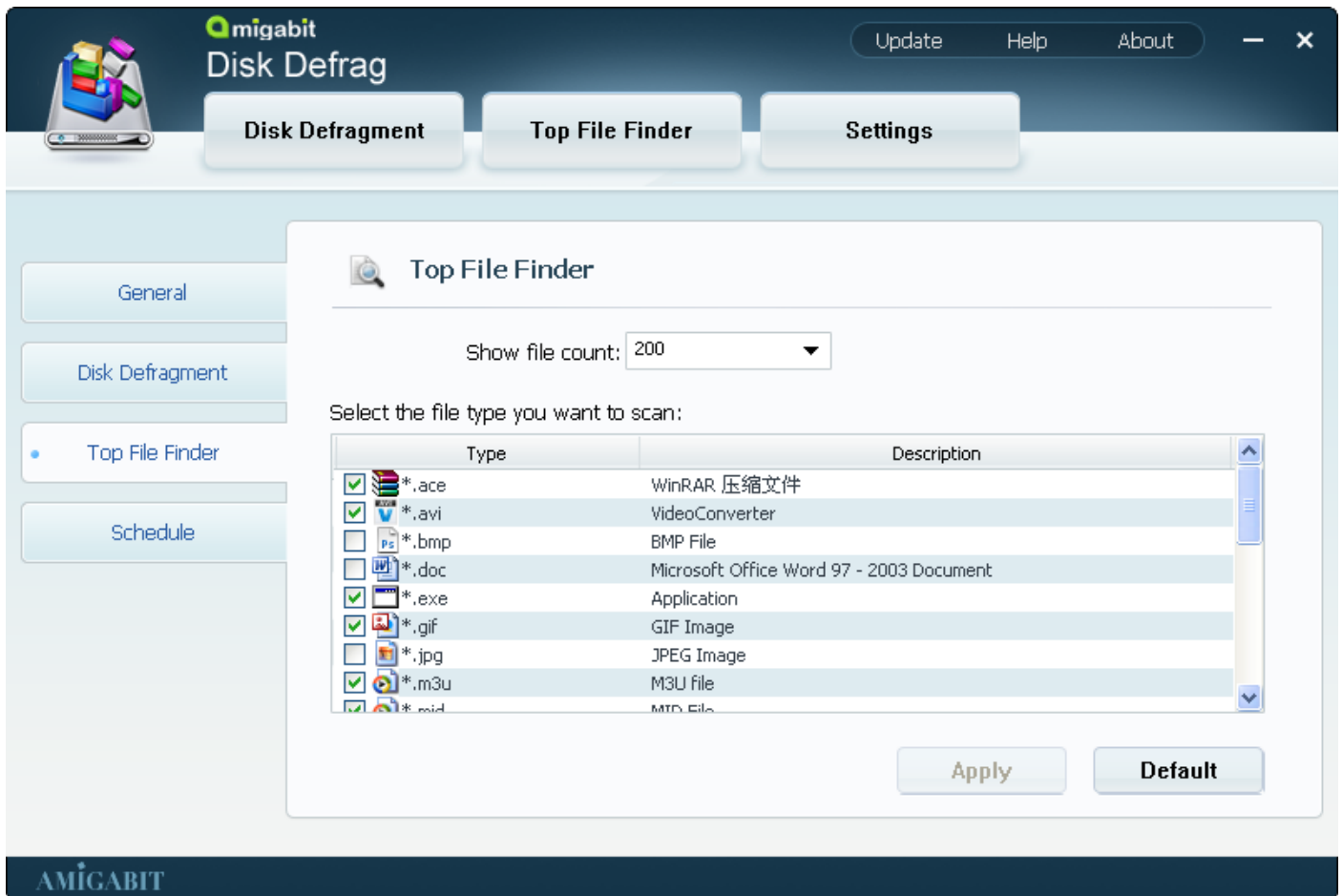
- **General:** Set software interface language and more settings.



- **Disk Defrag:** Do advanced settings on hard drive defragmentations.



- **Top File Finder:** Other settings on top file finder.



- **Schedule:** Customize your scheduled disk defragment task.

